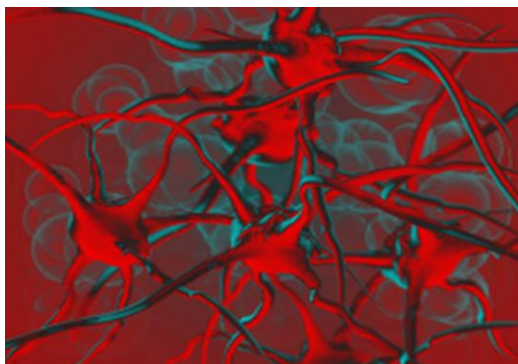


# Molina Healthcare

## Coding Education

### Aortic Ectasia



Molina Healthcare is committed to supporting your clinical practice. Please take a moment to review this coding and documentation example to enhance your knowledge.

Aortic ectasia is not the same as aortic aneurysm. Aortic ectasia is a common finding, often described in imaging studies as an aortic root dilatation. It is commonly associated with hypertension and aging.

Aortic ectasia, unspecified

- ICD-9 Code: 447.70
- ICD-10 Code: I77.819

Aortic ectasia, thoracic

- ICD-9 Code: 447.71
- ICD-10 Code: I77.810

Aortic ectasia, abdominal

- ICD-9 Code: 447.72
- ICD-10 Code: I77.811

447.73 Aortic ectasia, thoraco-abd

- ICD-9 Code: 447.73
- ICD-10 Code: I77.812

#### Documentation Examples:

##### *Initial Diagnosis*

82 year old male with Aortic ectasia

- **Assessment:** Findings on CXR
  - **ICD-9 Code:** 447.70 Aortic ectasia, unspecified site
  - **ICD-10 Code:** I77.819 Aortic ectasia, unspecified site

**Plan:** Optimize blood pressure control

##### *Established Diagnosis*

76 year old female with Aortic ectasia, thoracic

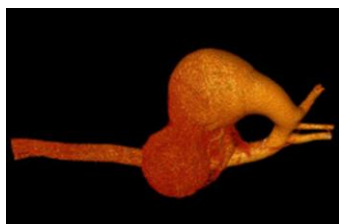
- **Assessment:** risk factors controlled
  - **ICD-9 Code:** 447.71 Thoracic aortic ectasia
  - **ICD-10 Code:** I77.810 Thoracic aortic ectasia

**Plan:** Continue BP meds and dietary therapy

Have Questions?

Contact: [Ramp@MolinaHealthcare.com](mailto:Ramp@MolinaHealthcare.com)

# Molina Healthcare Coding Education Aneurysm of Artery (Non-Aortic)



Molina Healthcare is committed to supporting your clinical practice. Please take a moment to review this coding and documentation example to enhance your knowledge.

It is important to capture other arterial conditions outside Abdominal Aortic Aneurysm. Here are a few conditions and their diagnosis codes to be aware of:

## The Aneurysm or Pseudoaneurysm of:

- Artery of upper extremity
  - ICD-9 Code: 442.0 ICD-10 Code: I72.1
- Renal artery
  - ICD-9 Code: 442.1 ICD-10 Code: I72.2
- Iliac artery
  - ICD-9 Code: 442.2 ICD-10 Code: I72.3
- Artery of lower extremity
  - ICD-9 Code: 442.3 ICD-10 Code: I72.4
- Neck; includes external carotid artery; excludes internal carotid
  - ICD-9 Code: 442.81 ICD-10 Code: I72.0
- Subclavian artery
  - ICD-9 Code: 442.82 ICD-10 Code: I72.8
- Splenic artery
  - ICD-9 Code: 442.83 ICD-10 Code: I72.8
- Other visceral artery
  - ICD-9 Code: 442.84 ICD-10 Code: I72.8
- Other (excludes cerebral, coronary, pulmonary)

## Documentation Examples:

- **71 year old man with popliteal artery aneurysm**

**Assessment:** Stable 1.7 cm popliteal artery aneurysm

- **HCC/ICD-9 Code:** 442.3
- **ICD-10 Code:** I72.4 Aneurysm of artery of lower extremity

**Plan:** Patient urged to quit smoking, continue blood pressure control, and repeat annual ultrasound

OR

- **65 year old male with iliac artery aneurysm**

**Assessment:** Patient remains asymptomatic

- **HCC/ICD-9 Code:** 442.2
- **ICD-10 Code:** I72.3 Aneurysm of iliac artery

**Plan:** Will repeat imaging and consider follow up with vascular surgery depending on findings

Have Questions?

Contact: [Ramp@MolinaHealthcare.com](mailto:Ramp@MolinaHealthcare.com)