



Wisconsin Leadership Meet & Greet

December 19, 2025

Agenda

Welcome

Luis Carmona-Gonzalez, Director, Provider Relations

Introduction and Molina Overview

Brett Davis, Plan President

Network & Operations

Joe Dietlin, VP, Network & Operations

Provider Relations, Resources & Key Contacts

Luis Carmona-Gonzalez



The background is a solid teal color. It is decorated with numerous white snowflakes of various sizes and shapes, scattered across the entire surface. Interspersed among the snowflakes are small white dots.

Brett Davis

Plan President, Molina Healthcare of Wisconsin
(dba My Choice Wisconsin)



For more than 40 years

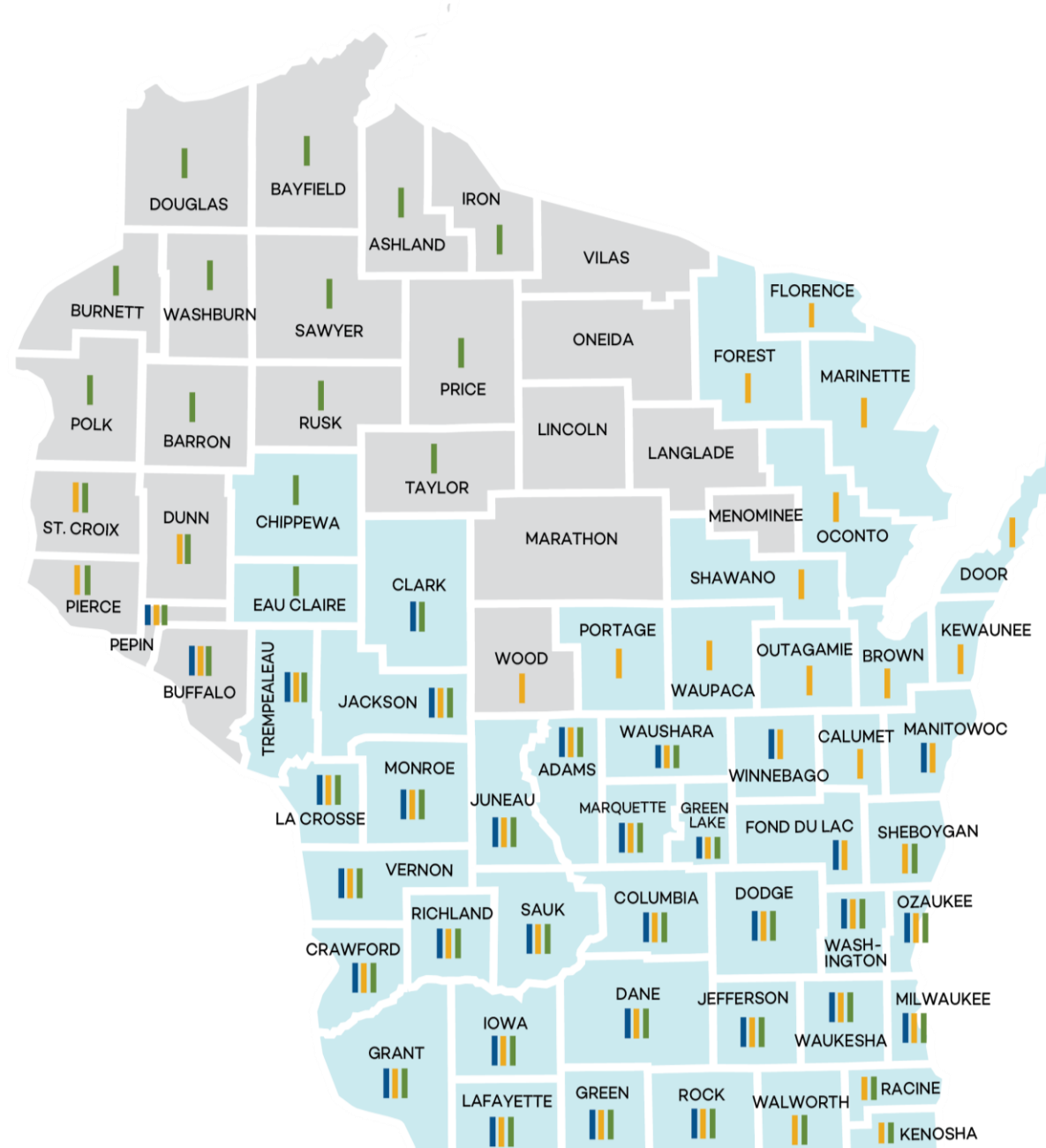
Molina Healthcare has been dedicated to delivering quality health benefits and programs, with a member-centric approach.

Currently, we offer health plans in 21 states, each tailored to meet the unique needs of its population.

We are committed to supporting those we serve and helping them achieve the best possible health outcomes for their unique situations.



Wisconsin service area



Map Key

- Medicaid SSI and BadgerCare Plus
- Medicare
- Family Care
- Family Care Partnership*

*Some counties pending DHS approval

In 2026, Molina will serve 65 counties in Wisconsin.

Executive Leadership



Brett Davis
Plan President



Joe Dietlin
VP, Network & Ops



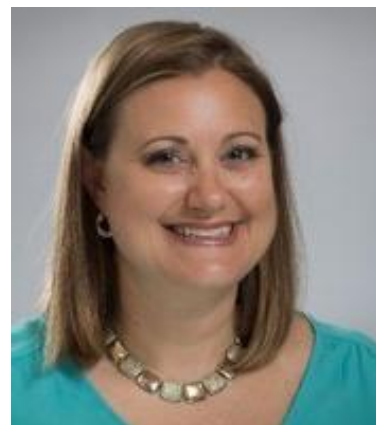
Betsy Van Heesch
VP, Healthcare
Operations (LTSS)



Raymond Zastrow, MD
Chief Medical Officer



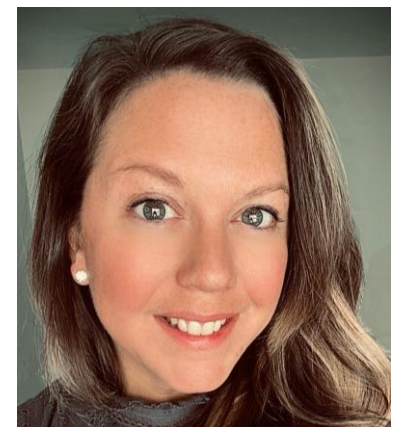
Karen Mallak
VP, Healthcare
Services



Julie Utter
AVP, Quality & Risk
Adjustment



Amber Lococo
AVP, Government
Contracts



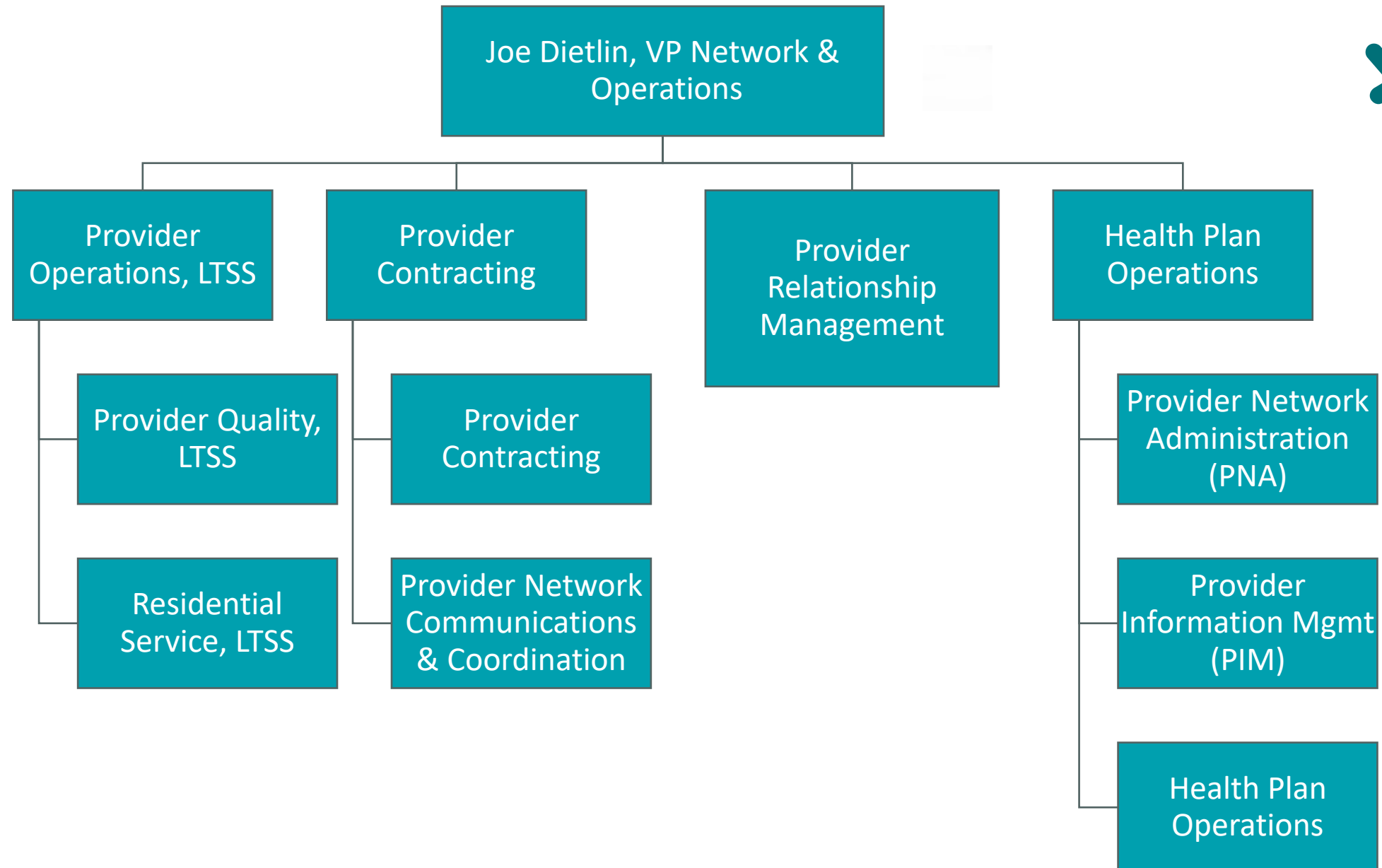
Britt Paulsen
AVP, Growth & Community
Engagement



Joe Dietlin

VP, Network & Operations

Network and Operations Team





Wisconsin Flood Relief



Food Pantry Donations and Employee-Led Food Drive





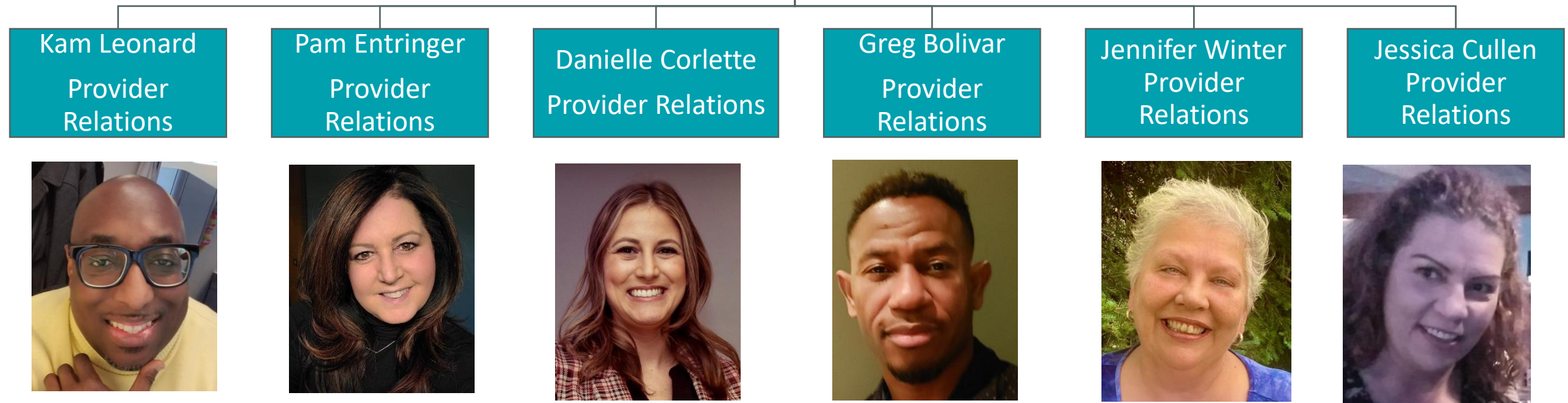
Luis Carmona-Gonzalez

Director, Provider Relations

Provider Relationship Management



Luis Carmona-Gonzalez
Director, Provider Relations



Our Wisconsin Continuum of Care

Medicaid SSI & BadgerCare Plus

- Molina offers Medicaid health plans and services for those who qualify for state-sponsored benefits based on financial need.
- This includes children, pregnant women, seniors and people with disabilities.

Medicare Dual-Eligible Special Needs

- Molina offers Medicare Advantage plans to seniors and individuals with disabilities who are eligible for Medicare and Medicaid benefits.
- These plans help coordinate all of their hospital and medical coverage needs.
- They include Part D Prescription Drug Coverage and additional benefits such as dental, hearing, vision, transportation, etc.

Family Care & Family Care Partnership

- These Managed Long Term Services and Supports (LTSS) services help individuals with chronic illnesses, disabilities, or other conditions who need assistance with daily activities.
- Support also includes coordinating long-term care services, such as home health or nursing facility care, with the goal of improving care coordination, reducing costs and promoting care in community settings over institutional care.

Know Who to Contact

Websites:

- molinahealthcare.com/WI
- mychoicewi.org

Provider Manuals:

- [Medicaid BadgerCare+ & SSI](#)
- [My Choice Wisconsin Provider Handbook](#)
 - Applicable for Medicare Dual Advantage, Family Care, and Family Care Partnership



Not sure where to go? Reach out to
MHWIPProviderNetworkManagement@molinahealthcare.com
We'll help get you to the right place.



Know Who to Contact

Program	Molina Medicaid BadgerCare Plus (BC+) and SSI (Supplemental Security Income)	My Choice Wisconsin Medicare Dual Advantage, Family Care, Family Care Partnership
Claim status	<u>Availity</u> EDI 276/277 transactions	<u>MIDAS</u>
Member services	888) 999-2404	(800) 963-0035
Provider services	(855) 326-5059	(800) 963-0035
Provider manual	<u>Molina Medicaid Provider Manual</u>	<u>My Choice Provider Handbook</u>
Website	<u>molinahealthcare.com/wi</u>	<u>mychoicewi.org</u>

What to Expect in 2026

- Expansion of Dual Advantage and Partnership offerings into new counties
- Preparing for full integration into Molina's systems on 1/1/27
- You Matter to Molina monthly webinars
- Community Advisory Council in 2026





Happy Holidays

from Molina Healthcare

Working with you is a gift.
We're grateful for your partnership.

