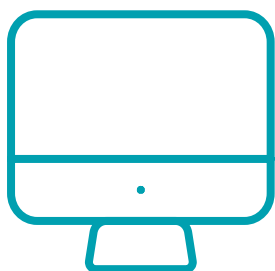


The Federal Lifeline Program
provides qualified individuals with

FREE WIRELESS SERVICE



SIGN UP TODAY!

Visit truconnect.com/molina/ky

Qualified Molina customers will receive a **free phone with unlimited talk, text, data, and international calling***, every month.

Qualifying Public Assistance Programs

- Supplemental Nutrition Assistance Program (SNAP/Food Stamps/Food Assistance)
- Medicaid
- Supplemental Security Income (SSI)**
- Federal Public Housing Assistance (FPHA)
- Veterans Pension or Survivors Pension Benefit

Annual Income Guidelines:

Household Size & Annual Income Limits

| | |
|---------------------|---------------------|
| 1 Member, \$21,128 | 5 Members, \$50,828 |
| 2 Members, \$28,553 | 6 Members, \$58,253 |
| 3 Members, \$35,978 | 7 Members, \$65,678 |
| 4 Members, \$43,403 | 8 Members, \$73,103 |

For each additional member, add \$7,425

Questions? Please Visit TruConnect.com/Molina or Call (844) 700-0795

Applicants must be at least 18 years of age or show proof of being an emancipated minor.

*Offer varies by state. Eligibility proof may not always be required, as the National Verifier often verifies eligibility through program databases. Documentation is only needed if the qualifying program isn't linked. For more details, visit www.truconnect.com/terms-and-conditions. All TruConnect plans offer free international calling to select destinations. Unlimited international calling is available to specific countries and is subject to plan restrictions. Certain countries may have minute caps or other limitations. All usage is subject to fair use policies, TruConnect's terms and conditions, and a limit of 15 unique international numbers dialed per month.

**Social Security benefits and/or Social Security Disability benefits are not program-based eligibility qualifiers. Social Security and/or Social Security Disability income may only be used to qualify for Lifeline Program participation under the income eligibility qualification method. This is a Lifeline service brought to you by TruConnect. Lifeline is a government assistance program. The service is non-transferable and only eligible consumers may enroll. Only one Lifeline benefit is allowed per household. Visit www.truconnect.com for details, restrictions, and general terms and conditions. This offer is valid for Passport Health Plan members by Molina Healthcare in Kentucky.